

# ALP-HORN

SPRING  
2010

## NEWSLETTER OF THE ADULT LEARNING PROGRAM

### SPRING PREVIEW MEETING TUESDAY, JANUARY 12, 2010, 9:30 AM—NOON HERITAGE HALL, SEABURY, BLOOMFIELD, CT

The Adult Learning Program will conduct its Spring Preview Meeting on Tuesday, January 12, from 9:30 am to noon at Heritage Hall, Seabury Retirement Community. Seminar presenters will briefly describe each of our spring programs, and you can register for the programs of your choice. Our featured speaker will be Kathleen Lynch Bolduc, the Chief Executive Officer of the Greater Hartford Arts Council, an organization that supports more than 150 arts and heritage organizations in 34 towns in the capital region of Connecticut and is ranked in the country's top ten united arts funds by *Americans for the Arts*. Kate will talk on *The State of the Arts*, covering a number of aspects of the arts and art communities in Connecticut, including a consideration of the impact of the current budget crisis on the arts.

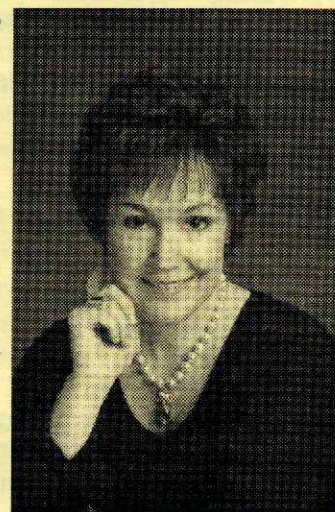
Prior to assuming her current role at the Greater Hartford Arts Council Kate was Executive Vice President and Chief Marketing Officer for Travelers Companies.

She has always been active in the Hartford community; she served as Vice

Chairman of the Travelers Foundation, which supports initiatives that involve education, arts and culture and community development programs around the country; a member of board of Journey Home, a local coalition to end homelessness; and, before her current position with the Greater Hartford Arts Council, a member of its Executive Board. She also led Travelers' Education Access Initiative in the Hartford region, bringing together business leaders and major client organizations and charging them with integrating Capital Community College's programs within the community.

Kate has received numerous professional and vocational awards, including being named honorary chairperson for the Boys and Girls Club of Hartford and induction into the YWCA of the City of New York's Academy of Women Achievers.

Please join us to hear what will surely be stimulating presentation, to learn about our spring program, and to greet old friends and make new ones



*Kate Bolduc*

### PARKING FOR THE SPRING PREVIEW MEETING

There are not enough parking places at Seabury to accommodate all the attendees at the January Preview Meeting. Therefore we must all park at the Beth Hillel Synagogue. This parking lot is next to Seabury, just west on Wintonbury Avenue. The synagogue has asked us to park behind the building, so as to leave space available in front of the building for people taking part in activities there. They are particularly emphatic about not parking in front of the eastern end of the building (the end closest to Seabury). A Seabury shuttle will be available beginning at 9:00 a.m. to take you to Seabury, and also to return you there following the meeting.

This is the same arrangement that has worked so well for the past several meetings. **NO PARKING WILL BE AVAILABLE AT SEABURY FOR THIS EVENT UNLESS YOU HAVE A HANDICAPPED PERMIT.**

Note that if the meeting has to be canceled because of a winter storm, the snow date is January 13, and the same parking rules will apply.



## Welcome, New Members!

Let's greet these new members with a very warm "Hello!"

Billie Alban, Bloomfield  
Angela Alexander, Hartford  
Muriel Barall, West Hartford  
Pat Beaudoin, Bloomfield  
Charlotte Berman, West Hartford  
Don and Linda Berry, Bloomfield  
Martin Beskind, West Hartford  
David Borden, West Hartford  
Ann and Kenneth Brock, Bloomfield  
Miriam Butterworth, Bloomfield  
Ron and Patricia Cimadon, Enfield  
Catherine Dondamulle, Bloomfield  
Ruth Dorman, South Windsor  
Shirley Dudley, Hartford  
Marilyn Eichler, West Hartford

Jean Filer, Bloomfield  
Fran Friedman, West Hartford  
Rosealie Gann, West Hartford  
Betty Garber, Bloomfield  
Diana and William Goldberg, Somers  
Joseph Harrison-Becker, West Hartford  
Martha Hoyt, Wethersfield  
Marilyn Johnston, Bloomfield  
Bob and Clair Katz, West Hartford  
Peggy Kunkel, West Hartford  
James Lehmann, Bloomfield  
Hannah Libman, West Hartford  
Robert Mandelkern, West Hartford  
Marlene Melcher, West Hartford

Terry Murphy, Newington  
Barbara Perrone, Bloomfield  
Llewellyn Powell, Bloomfield  
John Rohrbach, Bloomfield  
Sylvia Schindlerman, West Hartford  
Mary Simon, Wethersfield  
Eleanor Sulston, Bloomfield  
Leonard Swade, Windsor  
Bill Taylor, Bloomfield  
Owen VanBrocklin, Bristol  
Richard and Susan Watson, Bloomfield  
Jean Weill, West Hartford  
Sally Welensky, West Hartford  
Marilyn Winograd, West Hartford  
Aaron and Jo-Ann Zolotor, Enfield

## GENEROUS FRIENDS

We extend enormous gratitude and appreciation to the following individuals for their generous donations to ALP:

Ivan Backer  
Eleanor Caplan  
Joyce Carleton  
Zelda Chester  
John Condron  
Anne Cook  
Mabel Donnelly  
Richard Edwards  
Kiki Eglinton  
Paula Fisher

Sally Foster  
Fannie Gabriel  
Florence Grieb  
June Johnson  
Marion Kelliher  
Nancy Kramer  
Peggy Kunkel  
Trudy Lovell  
Antoinette Mason

Anne and Walter Mayo  
Rachel Markowitz  
Joseph Panitch  
Elizabeth Rich  
Eleanor Sulston  
Ralph Sundquist  
Patricia Walker  
Mary Ann Watson  
Richard Watson



## AND NOW, A FEW REMINDERS...

### ***Wear Your Name Tags! Sign the Sign-in Sheets!***

Remember signing in at the desk by the Health Center main desk? Well, Seabury decided that that procedure was causing traffic jams, and that we should not do that any more. But they really, really need to know who is at Seabury at all times. So they want us to wear out name tags, every time we come, not just when we think of it. If you have lost yours, get in touch with the office, 860-570-9079. And make sure you sign in at every seminar you attend.

***Parking.*** As Seabury's guests we are allowed to park only in the rear portion of the Health Center parking lot (first driveway to the right, up the hill, and a right turn to the rear). We should not park in the front circle.

## SNOW POLICY

We always hope winter snow storms will take place on days other than those on which our seminars are held! However, if in spite of our hopes, there is a serious storm, check the school closing announcements on television. If Hartford Schools are closed, our courses will be cancelled on that day. If Hartford Schools have a delayed opening, we meet at our usual time. You may have to be late but do the best you can. Call 860-695-SNOW for the status of Hartford schools.

## GUEST POLICY

A member may bring a non-ALP guest to one session of one seminar without charge. This policy is meant to encourage the guest to become a member in order to attend future classes.

## SPRING 2010 SEMINARS

### SS-1 SHORT STORIES

Carol Matzke, Coordinator. Mondays, Feb. 1, Mar. 1, April 5, May 3, 1-3 pm.

Discussion of two short stories each session, selected by volunteer members of the group. We will also learn more about the authors, some lesser known and some more well known. A \$7 contribution will cover the cost of photocopying.

### SS-2 CONNECTICUT FORUM

Bill Olds, Coordinator. Thursdays, Feb. 4, 11, 18, 25, 9:30 am-noon.

The Coordinator will show tapes of past sessions of the Connecticut Forum, and lead discussions on them.

### SS-3 PSALMS UNLIMITED

The Rev. Jan Jaeger, Presenter. Thursdays, Feb. 4, 11, 18, 25, 1-3 pm

An in-depth exploration of the Psalms and an opportunity to write/compose psalms, with comments by C.S. Lewis, and Walter Brueggemann. Maximum class size, 12.

### SS-4 ANTIQUES AND HISTORY: WHAT THEY ARE GOOD FOR

Kate Steinway, Presenter. Monday, Feb. 8, 10 am-noon. Tuesday, Feb. 9, Tour, Connecticut Historical Society, 10 am

The Presenter, Executive Director of the Connecticut Historical Society, will show a power point presentation and show some real objects from the CHS; she will talk about what her museum and library collect and why, and how the collection has changed over time. On the second day we will visit the CHS; there is an admission charge of \$3.00.

### SS-5 CREATIVE WRITING

Dorothy Sterpka, Presenter. Wednesdays, Feb. 10, 17, 24, Mar. 3, 17, 1-3 pm.

Self-expression through poetry, memoirs, and stories is the focus of this seminar. Class meeting discussions, based on sharing the writings of participants and guided by an experienced teacher, provide encouragement, motivation, and critiques. The book *50 Ways To Help You Write*, by Fran Shaw, will be the guide to learning how to add humor, dialog, and other methods into our writing. Maximum class size, 12.

### SS-6 OPERA

David Buddington, Coordinator. Fridays, Feb. 12, 19, 26, Mar. 5, 12, 19, 9:30-noon.

Members of the class will select and present by videotape or DVD operas from the known and lesser-known repertoire. Maximum class size, 25.

### SS-7 MOVIE BUFFS

Jim Hanley, Presenter. Thursdays, Mar. 4, Apr. 1, May 6. 10:30 am-noon.

Participants view films at Cinestudio, at Trinity College, or elsewhere, at a time of their choosing, and then discuss them in class at Seabury with the knowledgeable director of Cinestudio.

### SS-8 INTERMEDIATE BRIDGE

Clark Coughlin, Presenter. Thursdays, March 4, 11, 18, 25, 1-3 pm.

A refresher course including popular conventions (2 clubs, weak 2's, Jacoby Transfers, Stayman, etc.); introduction to Duplicate Bridge. Participants must have a basic knowledge of Bridge. Maximum class size, 16.

### SS-9 WRITING YOUR MEMOIRS

Leta Marks, Presenter. Tuesdays, Mar. 9, 16, 23, 30, 1-3 pm.

This seminar will feature brief lectures and some writing drills, followed by students' writing memoirs and reading them before the group. The group offers comments as well as the leader. and film. Limit, 15.

### SS-11 ABRAHAM LINCOLN CONTINUED

Ivan Backer, Presenter. Wednesdays, March 10, 24, Apr. 7, 10 am-noon. (*At Duncaster*)

DVD Lectures by Prof. Allen C. Guelzo begun in fall 2009 will conclude with six more lectures focusing on Lincoln's role in the Civil War and evaluating his legacy. Participants need not have attended the sessions in the fall.

### SS-10 GILBERT AND SULLIVAN: THE TIMES, THE MEN, AND THE MUSIC

Walter Mayo, Presenter. Tuesdays, Mar. 23, 30, Apr. 20, 27, 10 am-noon.

Through readings, music, and video sources, we will examine the lives of W.S. Gilbert and Arthur Sullivan and the influences on their compositions, and explore their operettas.

### SS-12 NOTABLE NINTHS

Bruce Bellingham, Presenter. Wednesdays, Mar. 24, 31, Apr. 7, 14, 21, 1-3 pm.

A study of the five greatest ninth symphonies of the 19th century, by Beethoven, Schubert, Brückner, Dvořák, and Mahler—with substantial listening and analysis.

### SS-13 THE PLAY'S THE THING

Nancy Kramer, Presenter. Thursdays, April 1, 8, 15, 29, 1-3 pm.

Participants will read plays aloud, discuss them, and view an occasional video. The leader will present material on the authors and lead the discussion. Maximum class size, 15.

Continued on Page 4

**SS-14 ORIGINS AND EVOLUTION OF THE MIDDLE EAST CONFLICT**

Professors Donna Robinson Divine and Curt Beck, Presenters. Mondays, Apr. 12, 19, 26, 1-3 pm. Donna Robinson Divine, Professor of Jewish Studies at Smith College, will focus on the history and implications of the establishment of the Jewish state and its struggle for land, power, and national survival. Curt Beck, Professor Emeritus of Political Science at the University of Connecticut, will examine the failure, thus far, of the Israelis and Palestinians to co-exist in peace and the consequent threats to international stability in the Middle East.

**SS-15 PLAYING WITH POETRY**

Joan Sereda, Presenter. Tuesdays, Apr. 13, 20, 27, May 4, 11, 18, 1-3 pm.

The presenter, a poetry lover who makes no claim to be a great poet herself, will lead us other non-great poets and poetry lovers through a series of adventures, including enjoying our favorite poets and their poems, and having fun with their style, maybe writing in that style, or maybe something else. Come play with us!

**SS-16 ENVIRONMENTAL ISSUES**

Ann Steele and Elaine Luckey, Coordinators. Wednesdays, May 5, 12, 19, 26, 10 am-noon.

Four speakers will address distinct topics: Russ Brennerman, long time attorney and professor at Trinity College, will speak on how environmental values can be implemented; Margaret Miner, Executive Director of Rivers Alliance, will deal with protecting water resources in CT; Sarah Uhl, of Clean Water Action, will address environmental threats to healthy aging and ways to promote safer and healthier public policies; and a representative from the Connecticut Fund for the Environment will discuss threats to the Long Island Sound.

**SS-17 JUVENILE JUSTICE**

Judge Henry Cohn, Presenter. Thursdays, May 6, 13, 1-3 pm.

Judge Cohn will discuss how juveniles are handled in Connecticut through the Juvenile Court system, up to the point of the verdict. In the next session, a second presenter will discuss the post-verdict handling of these youngsters.

**SS18 HARTFORD'S FLOOD CONTROL SYSTEM**

John McGrane, Presenter. Mondays, May 10, 17, 10 am- noon.

After severe flooding in the 1930's, Hartford and the U.S. Army Corps of Engineers designed a comprehensive flood control system for the city. Session one, at Seabury, will give a historical and design overview of the system, Session two will be a tour at the pumphouse in the North Meadows with an explanation of the system.

**SPRING SINGLE SESSIONS**

**SSS1 POEMS YOU CAN TALK TO**

Alexandrina Sergio, Presenter. Mon., Feb. 15, 1-3. Poet Alexandrina Sergio will read from her recently published collection *My Daughter is Drummer in the Rock 'n Roll Band* (Antrim House, 2009), accompanied by pianist David Sergio.

**SSS2 NEANDERTHAL MAN: THEM OR US?**

Michael Park, Presenter. Tues., Feb. 16, 1-3 pm.

A major debate in anthropology is the question of whether Homo Sapiens is a young species, separate from so-called archaic humans such as the Neanderthals, or is the latest manifestation of a single ancient species. This talk will examine the arguments for both points of view and propose a new model.

**SSS3 COLLECTIVE BARGAINING IN EDUCATION IN CONNECTICUT**

Neil Macy, Ed.D., Presenter. Mon., Feb. 22, 1-3 pm.

Dr. Macy, who taught collective bargaining, contract management, and grievance arbitration at the University of Connecticut for 18 years, will review the history and present status of teacher negotiation.

**SSS4 DIGGING THROUGH THE BIBLE: WHAT ARCHEOLOGY REVEALS ABOUT ANCIENT PEOPLES AND PLACES**

Richard A. Freund, Ph.D., Presenter. Tues., Feb. 23 1-3.

Dr. Freund's new book, *Digging Through the Bible*, was nominated for a Book of the Year Award for biblical archeology. Here he illustrates and discusses some discoveries, controversies, and mysteries of biblical archeology.

**SSS5 NOAH WEBSTER'S MANY FACES**

Christopher Dobbs, Executive Director, Noah Webster House. presenter. Tues., Mar. 2, 1-3 pm.

This presentation highlights Noah Webster's role in helping to create a national identity. Best remembered as the author of his great dictionary, he was also an educator, political commentator, Federalist, abolitionist, statesman, co-founder of Amherst College, and father of America's copyright laws. We will also hear about the Noah Webster House in West Hartford.

**SSS6 LASCAUX, THE SISTINE OF PREHISTORY**

Joyce Carleton, Presenter. Mon., Mar. 8, 1-3 pm.

A look at artwork on cave walls at Lascaux, France, done some 17,000 years ago by prehistoric man during the last Ice Age. An effort will be made to show that the animal figures represented show that man had already begun to express his environment in symbolic terms, and had probably begun to mythologize.

Continued on page 5

Spring Single Sessions (Cont'd from p 4)

**SSS7 HIDDEN CONNECTICUT:NATIVE**

**TREASURES, HISTORICAL SITES, WATERFALLS AND OVERLOOKS ACROSS THE STATE**

Peter Marteka, Presenter. Mon., Mar. 15, 1-3.  
Ever want to peer into mine opening at a place where colonists mined lead that helped the Continental Army defeat the British? Or visit a hill in Stonington where tar barrels were once burned warning the harbor below that the British were coming? Join Peter Marteka and his exploration of hidden Connecticut.

**SSS8 MENTAL DISORDERS IN THE AGED**

Karen Blank, M.D., Presenter. Mon., Mar. 22, 1-3 pm.

Dr. Blank, the Medical Director of the Institute of Living's Braceland Center for Mental Health and Aging, will discuss memory disorders, dementia, depression, and anxiety among the aging.

**SSS9 Connecticut Youth Forum**

Pat Rossiter, Presenter. Mon., Mar. 29, 1-3 pm.  
The speaker will describe how the Connecticut Forum works with young people in the area to give them a means of expression and experience in dealing with public issues.

**SSS10 WHERE DID KISMET COME FROM?**

Jack Brin, Presenter. Wed., Apr. 28, 1-3 pm.  
This lecture with musical examples will concentrate on the original source material by Alexander Borodin and the adaptation by Robert Wright and George Forrest for the 1953 production of Kismet, hoping that interest will be kindled in both the musical sources and the musical play itself.

**SSS11 ARTHRITIS AND JOINT REPLACEMENT**

Durgesh A. Nagarkatti, Presenter. Wed., May 5, 1-3 pm

Dr. Nagarkatti, an orthopedic/trauma surgeon specializing in total joint replacement of shoulders, knees, and hips at Hartford Hospital, will discuss the rapidly growing field of dealing with arthritis and replacing joints.

**SSS12 HISTORY AND TOUR OF ELIZABETH PARK ROSE GARDEN**

Marcie Martin, Rosarian, Tour Leader.

Tuesday, June 8, noon at the Gazebo, Elizabeth Park. Rain dates, June 10, 15, 17.

The leader will speak for about three-quarters of an hour, so you may wish to bring a folding chair, which you may leave while you tour the garden. A hat, sun screen, and sun glasses are also useful.

**SEMINARS AND MEETINGS  
BY DAY OF THE WEEK**

**—MONDAY—**

**SHORT STORIES** Feb. 1; Mar. 1; April 5; May 3. 1-3 pm.

**ANTIQUES AND HISTORY** Feb. 8. 10-noon.

**POEMS YOU CAN TALK TO** Feb. 15. 1-3 pm.

**COLLECTIVE BARGAINING IN EDUCATION....**Feb. 22. 1-3

**LASCAUX, THE SISTINE OF PREHISTORY.** Mar. 8, 1-3 pm

**HIDDEN CONNECTICUT...**Mar. 15, 1-3 pm

**MENTAL DISORDERS IN THE AGED,** Mar. 22, 1-3 pm

**CONNECTICUT YOUTH FORUM** Mar. 29, 1-3 pm

**ORIGINS AND EVOLUTION OF THE MIDDLE EAST CONFLICT**  
Apr. 12, 19, 26, 1-3 pm

**HARTFORD'S FLOOD CONTROL SYSTEM...**May 10, 17.  
10 am-noon.

**CURRICULUM COMMITTEE** Jan. 4; Feb. 1; Mar. 1; Apr. 5;  
May 3. June 7. 1-3 pm.

**—TUESDAY—**

**SPRING PREVIEW MEETING** Jan. 12. 9:30 am-noon.

**CONNECTICUT HISTORICAL SOCIETY TOUR,** Feb. 9, 10 am-noon

**NEANDERTHAL MAN: THEM OR US** Feb. 16. 1-3 pm.

**DIGGING THROUGH THE BIBLE** Feb. 23, 1-3 pm

**NOAH WEBSTER'S MANY FACES...**Mar. 2, 1-3 pm

**WRITING YOUR MEMOIRS** Mar. 9, 16, 23, 30, 1-3 pm

**GILBERT AND SULLIVAN** Mar. 23, 30; Apr. 20, 27. 10 am-noon.

**PLAYING WITH POETRY...**Apr. 13, 20, 27, May 4, 11, 18, 1-3 pm

**ELIZABETH PARK ROSE GARDEN TOUR,** June 8, 12 noon.

**MEMBERSHIP COMMITTEE,** Jan. 26, Feb. 23, 1-3 pm

**—WEDNESDAY—**

**CREATIVE WRITING,** Feb. 10, 17, 24, Mar. 3, 17, 1-3 pm

**ABRAHAM LINCOLN CONTINUED** Mar. 10, 24, Apr. 7,  
10 am noon (*AT DUNCASTER*)

**NOTABLE NINTHS** Mar. 24, 31; Apr. 7, 14, 21. 1-3 pm

**WHERE DID KISMET COME FROM?...**Apr. 28, 1-3 pm

**ENVIRONMENTAL ISSUES** May 5, 12, 19, 26. 10 am-noon

**ARTHRITIS AND JOINT REPLACEMENT...**May 5, 1-3 pm

**—THURSDAY—**

**CONNECTICUT FORUM,** Feb. 4, 11, 18, 25, 9:30 am-noon

**PSALMS UNLIMITED,** Feb. 4, 11, 18, 25, 1-3 pm

**MOVIE BUFFS,** Mar. 4, April 1, May 6, 10:30 am-12 noon

**INTERMEDIATE BRIDGE,** Mar. 4, 11, 18, 25, 1-3 pm

**THE PLAY'S THE THING** Apr. 1, 8, 15, 29. 1-3 pm

**JUVENILE JUSTICE** May 6, 13. 1-3 pm

**ADVISORY BOARD** Jan. 28; Mar. 25; Apr. 22; June 24. 1-3 pm

**—FRIDAY—**

**OPERA** Feb. 12, 19, 26; Mar. 5, 12, 19, 9:30 am-noon



University of  
Connecticut

## ALP: Adult Learning Program

### Office

University of Connecticut 85 Lawler Road  
West Hartford, CT 06117  
Coordinator: Bertina Williams  
860-570-9079 (Office hours by appointment)  
E-mail: [alp@uconn.edu](mailto:alp@uconn.edu)

Helen Lansberg, *ALP-Horn* Editor

### Meeting Place:

Seabury  
200 Seabury Drive  
Bloomfield, CT 06002

### What Is ALP?

ALP is a participatory organization, directed by its volunteer members, open to older adults interested in academic learning. Members design and lead programs on a variety of subjects.

ALP is one of more than 500 Lifelong Learning Institutes in Retirement affiliated with the Elderhostel Institute Network.

Visit us at [www.uconnalp.org](http://www.uconnalp.org)

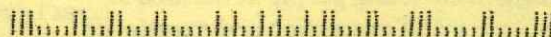
Non-profit Org.  
U.S. Postage

**PAID**

Storrs, CT  
Permit 4759

James Yaeger  
20 Loeffler Road, T423  
Bloomfield, CT 06002

0800232277 R007



## ALP SPRING PREVIEW MEETING

**TUESDAY, JANUARY 12, 2010**

**9:30 A.M. -12:00 NOON**

**(SNOW DATE JAN. 13)**

**HERITAGE HALL**

**SEABURY**

**200 SEABURY DRIVE, BLOOMFIELD, CT**



### FEATURING

**PREVIEW OF THE SPRING SEMINARS**

**A Presentation by Kathleen Lynch Bolduc**  
**Chief Executive Officer, Greater Hartford Arts Council**

***THE STATE OF THE ARTS***

# ALP MEMBERSHIP REGISTRATION FORM

## Spring 2010

www.ctculture.org



p entitles you to participate in the seminars described.  
 o your needs from the options listed below.  
 OLD, THEN FILL OUT AND MAIL THIS FORM TO :  
 University of Connecticut  
 85 Lawler Road  
 t Hartford, CT. 06117  
 ( 860) 570-9079

Phone (860) 726-2181  
 ID AD Apt. T423  
 e CT Zip 06002  
icasteremail.com

Terms, so if you paid for an annual membership this past fall,

SEMI-ANNUAL MEMBERSHIP:   ✓   Individual (Spring) \$55

### SEABURY RESIDENTS

(Seabury fees are reduced in appreciation for Seabury's providing space to ALP)

SEMI-ANNUAL MEMBERSHIP:            Individual (Spring) \$45

\*\*\*\*\*

Registration Amount            Check here if you are a new member           

Donation to ALP           

Please make checks payable to the University of Connecticut or to UConn.

## HOW WILL YOU CONTRIBUTE?

As outlined in the message from our co-chairs on the cover page, ALP is a volunteer organization with each of us contributing our share. Please let us know which committee or activity you'd consider working on or learning more about.

           **Curriculum Committee:** Plans all seminars and other events.

           **Membership Committee:** Integrates new members into ALP; nurtures leadership among members, including nominating board members; plans and staffs membership meetings in fall and spring.

           **Communication Committee:** Reaches out to potential new ALP members though news publicity, Public Access TV, libraries, speaking engagements, website, and publications; publishes the ALP-Horn.

           **Presentations:** Presents a seminar or single session; puts us in touch with a possible presenter.

**Thanks for your response!**

Name: \_\_\_\_\_ (Please Print)

**SEMINAR SELECTIONS** - Please number the courses you wish to take in order of preference, i.e., 1 for 1st choice, 2 for 2nd etc. All registrations will be considered the third day after the Preview Meeting. If a seminar is oversubscribed, new members will be given priority; all others will be chosen by lottery. A wait-list will be established and persons assigned to it will be notified if a place in the seminar becomes available. Those on waiting lists will be given priority for their second choice. *Please do not register for more seminars than you intend to take. If you find you cannot participate in a seminar please inform the ALP office so that others may be considered.*

*Please make a record of the courses chosen in your ALPhorn.* Unless you are notified from the ALP office that you are on a waiting list, plan to attend the course. Written confirmation will no longer be sent. Thank you for your cooperation. All seminars will be held at Seabury, except **SS10, Abraham Lincoln Continued** which will be held at Duncaster, Inc.

### SEMINARS

CHOICE	SEMINAR	START DATE	TIME
	SS1 SHORT STORIES	Mon. 2/1	1-3 pm
X	SS2 CONNECTICUT FORUM	Thurs., 2/4	9:30 am-noon
	SS3 PSALMS UNLIMITED	Thurs, 2/4	1-3 pm
	SS4-ANTIQUES AND HISTORY	Mon., 2/8	10 am-noon
	SS5-CREATIVE WRITING	Wed., 2/10	1-3 pm
	SS6-OPERA	Fri., 2/12	9:30 am-noon
	SS7-MOVIE BUFFS	Thurs., 3/4	10:30-noon
	SS8-INTERMEDIATE BRIDGE	Thur., 3/4	1-3 pm
	SS9-WRITING YOUR MEMOIRS	Tues., 3/9	1-3 pm
X	SS10-ABRAHAM LINCOLN <i>Duncaster</i>	Wed., 3/10	10 am-noon
	SS11-GILBERT AND SULLIVAN	Tues., 3/23	10 am-noon
	SS12-NOTABLE NINTHS	Wed., 3/24	1-3 pm
	SS13-THE PLAY'S THE THING	Thurs., 4/1	1-3 pm
	SS14-THE MIDDLE EAST CONFLICT	Mon., 4/12	1-3 pm
	SS15-PLAYING WITH POETRY	Tues., 4/13	1-3 pm
X	SS16-ENVIRONMENTAL ISSUES	Wed., 5/5	10 am-noon
	SS17- JUVENILE JUSTICE	Thurs., 5/6	10 am-noon
X	SS18- HARTFORD'S FLOOD CONTROL SYSTEM	Mon., 5/10	10 am-noon
	SSS1-POEMS YOU CAN TALK TO	Mon. 2/15	1-3 pm
X	SSS2-NEANDERTHAL MAN	Tues, 2/16	1-3 pm
X	SSS3-COLLECTIVE BARGAINING IN EDUCATION	Mon. 2/22	1-3 pm
X	SSS4-DIGGING THROUGH THE BIBLE	Tues., 2/23	1-3 pm
	SSS5-NOAH WEBSTER'S MANY FACES	Tues., 3/2	1-3 pm
	SSS6- LASCAUX, THE SISTINE OF PREHISTORY	Mon. 3/8	1-3 pm
	SSS7-HIDDEN CONNECTICUT	Mon. 3/15	1-3 pm
	SSS8-MENTAL DISORDERS IN THE AGED	Mon., 3/22	1-3 pm
	SSS9-CONNECTICUT YOUTH FORUM	Mon., 3/29	1-3 pm
	SSS10-WHERE DID KISMET COME FROM	Wed., 4/28	1-3 pm
	SSS11-ARTHRITIS AND JOINT REPLACEMENT	Wed., 5/5	1-3 pm
	SSS12, TOUR ELIZABETH ROSE GARDEN	Tues., 6/8	1-3 pm

Please cut or tear along the fold to separate the registration form